



# Avian Influenza

## PPP – BCP Introduction

6<sup>th</sup> July 2006 UN Agencies

**PRESENTER**



**Jean-Yves Gagnepain**

**Corporate Quality Manager**

**Nestlé (Thai)**

# DISCLAIMER



**Agronomist specialised in Marine Resources**

**Not a medical practitioner or a medical expert.**

**Information was / is collected from International SOS Services, Medical Experts, CDC, WHO, MOPH, Nestec and local Newspapers...**

# AGENDA



1. About PPP and BCP
2. Elaboration and implementation of PPP
3. Elaboration and implementation of BCP
4. Stay Linked to the world...
5. Conclusion words

1. About PPP and BCP
2. Elaboration and implementation of PPP
3. Elaboration and implementation of BCP
4. Stay Linked to the world...
5. Conclusion words

# ABOUT PPP AND BCP



PPP = Pandemic Preparedness Plan

It is about protecting **PEOPLE** within the Company.

# ABOUT PPP AND BCP



BCP = Business Continuity Plan

It is about protecting **BUSINESS** of the Company.

# ABOUT PPP AND BCP



*Here decisions are needed.*

**In October 2005, our CEO decided to appoint one Manager full time for 2 months to prepare the PPP first.**

**We contracted International SOS Services and worked with them.**

**BCP was initiated in December 2005. First version was available mid May 2006.**

1. About PPP and BCP
2. **Elaboration and implementation of PPP**
3. Elaboration and implementation of BCP
4. Stay Linked to the world...
5. Conclusion words

# ABOUT PPP AND BCP



## NESTLE INDOCHINA

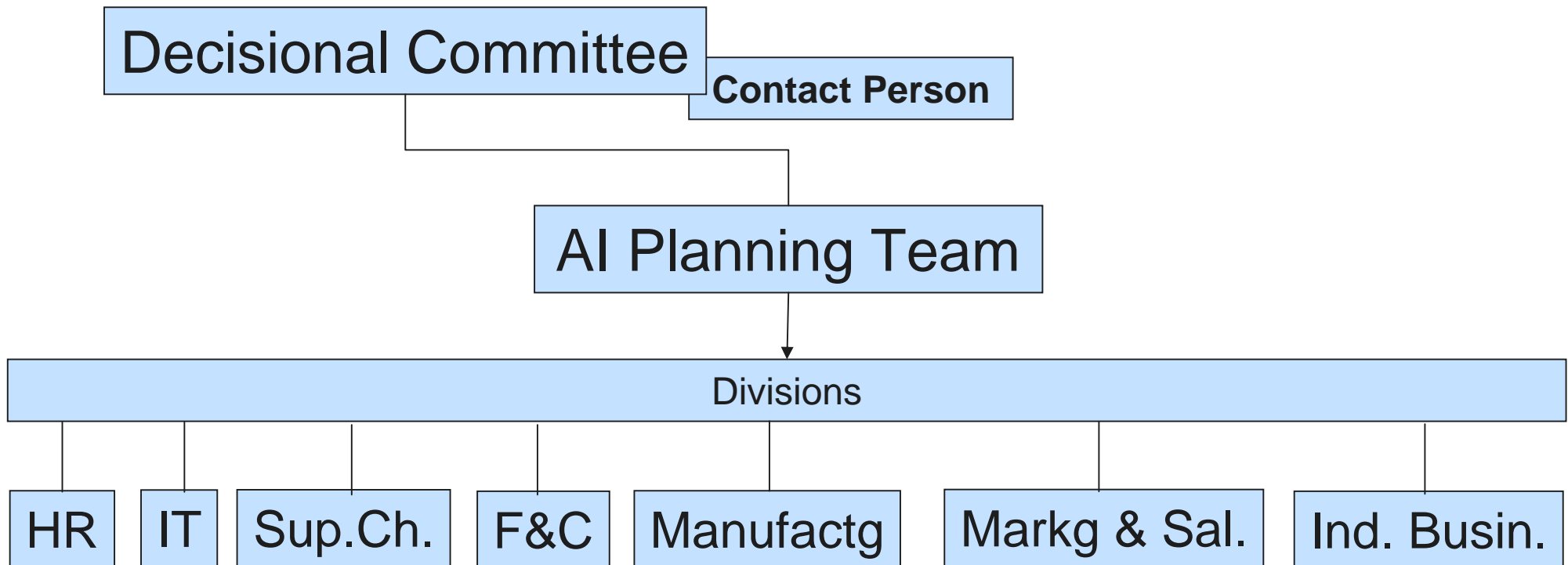
### PANDEMIC PREPAREDNESS CORPORATE ACTION PLAN (=PPP)

Executive Summary	
Members of the pandemic team and their role	
Introduction	Chapter 1
Corporate communication	Chapter 2
<i>Business Continuity Plan (done later)</i>	Chapter 3
Staff health	Chapter 4
Reduce risk of employees becoming infected outside facility	Chapter 5
Reduce risk of introduction of virus into facility	Chapter 6
Reduce risk of virus transmission within facility	Chapter 7
Management of infected / potentially infected staff	Chapter 8
Evacuation of staff	Chapter 9
Expatriates	Chapter 10
Travelling staff	Chapter 11
Antiviral medications	Chapter 12

# Pandemic Preparedness Plan



## COMMUNICATION CHANNELS – LINES OF COMMAND



## Pandemic Phases as Defined by WHO

WHO Phases	Description
<b>Phase 1</b>	No new influenza virus subtypes have been detected in humans. An influenza virus subtype that has caused human infection may be present in animals. If present in animals, the risk of human infections or disease is considered to be low.
<b>Phase 2</b>	No new influenza virus subtypes have been detected in humans. However, a circulating animal influenza virus subtype poses a substantial risk of human disease.
<b>Phase 3</b>	<b>Human infection(s) with a new subtype. No human-to-human spread, or at most rare instances of spread to a close contact.</b>
<b>Phase 4</b>	Small cluster(s) with limited human-to-human transmission. Spread is highly localized, suggesting that the virus is not well adapted to humans.
<b>Phase 5</b>	Larger cluster(s) but human-to-human spread still localized, suggesting that the virus is becoming increasingly better adapted to humans, but may not yet be fully transmissible (substantial pandemic risk).
<b>Phase 6</b>	Pandemic: increased and sustained transmission in general population.

# Pandemic Preparedness Plan



## COMMUNICATION TO EMPLOYEES

Communication planned to Divisional Managers first (business continuity plan and pandemic preparedness corporate action plan passed to them)

## MASTER COMMUNICATION PLAN

Communication planned to Staff (presentations to be cascaded)

Initial communication done to Divisions (Standard ppt)

Opening of Web Site on Avian Influenza (Nestlé refers to the site of SOS International + CDC + WHO + MOPH)



An adapted Sick Leave policy.

# Pandemic Preparedness Plan



## HEALTH OPTIMISATION FOR EMPLOYEES

### Seasonal influenza vaccination

**For 2005 : # 75% of Nestle employees vaccinated  
Use Information – Consent form .**

**Special considerations for employees suffering of certain Chronic Diseases.**

# Pandemic Preparedness Plan



## REDUCTION OF RISK FOR EMPLOYEES BECOMING INFECTED OUTSIDE FACILITY

### Basic hygiene rules

**Good to communicate them to all.**

**Transporters, Drivers, Families, Neighbors ...**

- In areas affected by AI epidemic
  - § Avoid contact with live birds (incl. faeces etc)
  - § Where contact with potentially infected birds cannot be avoided wear protective clothing (goggles, masks FFP2, gloves, etc.)
  - § All persons who had contact with birds from potentially infected areas to be closely monitored for symptoms of influenza (temp.  $>38^{\circ}\text{C}$ , cough, sore throat, muscular pain)

# Pandemic Preparedness Plan

## REDUCE RISK OF INTRODUCING VIRUS INTO FACILITY

**Door Screening at premises entrance**  
**Training of Security**



**Self Screening Form**

# Pandemic Preparedness Plan

## REDUCE RISK OF VIRUS TRANSMISSION IN FACILITY

### Cleaning and Desinfection

**Hand washing**

@@ (T)

**Clean vehicles**

@@ (T)

**Cough etiquette**

@@ (T)

# Pandemic Preparedness Plan

**Key Document :**

## PHASE RELATED ACTION PLAN MATRIX

**Pandemic Phases (WHO)**

**PPP  
Chapters**

**Chapter X  
Phase 3  
Preparation**

**Chapter X  
Phase 4  
Initiate**

**Chapter X  
Phase 5  
Reinforce**

**Chapter X  
Phase 6  
...**

Difficulty:

Communication at all levels

Raise proper awareness

Ensure correct implementation (Advisory visits - Audits needed)

1. About PPP and BCP
2. Elaboration and implementation of PPP
3. **Elaboration and implementation of BCP**
4. Stay Linked to the world...
5. Conclusion words

# Business Continuity Plan

## Divisions

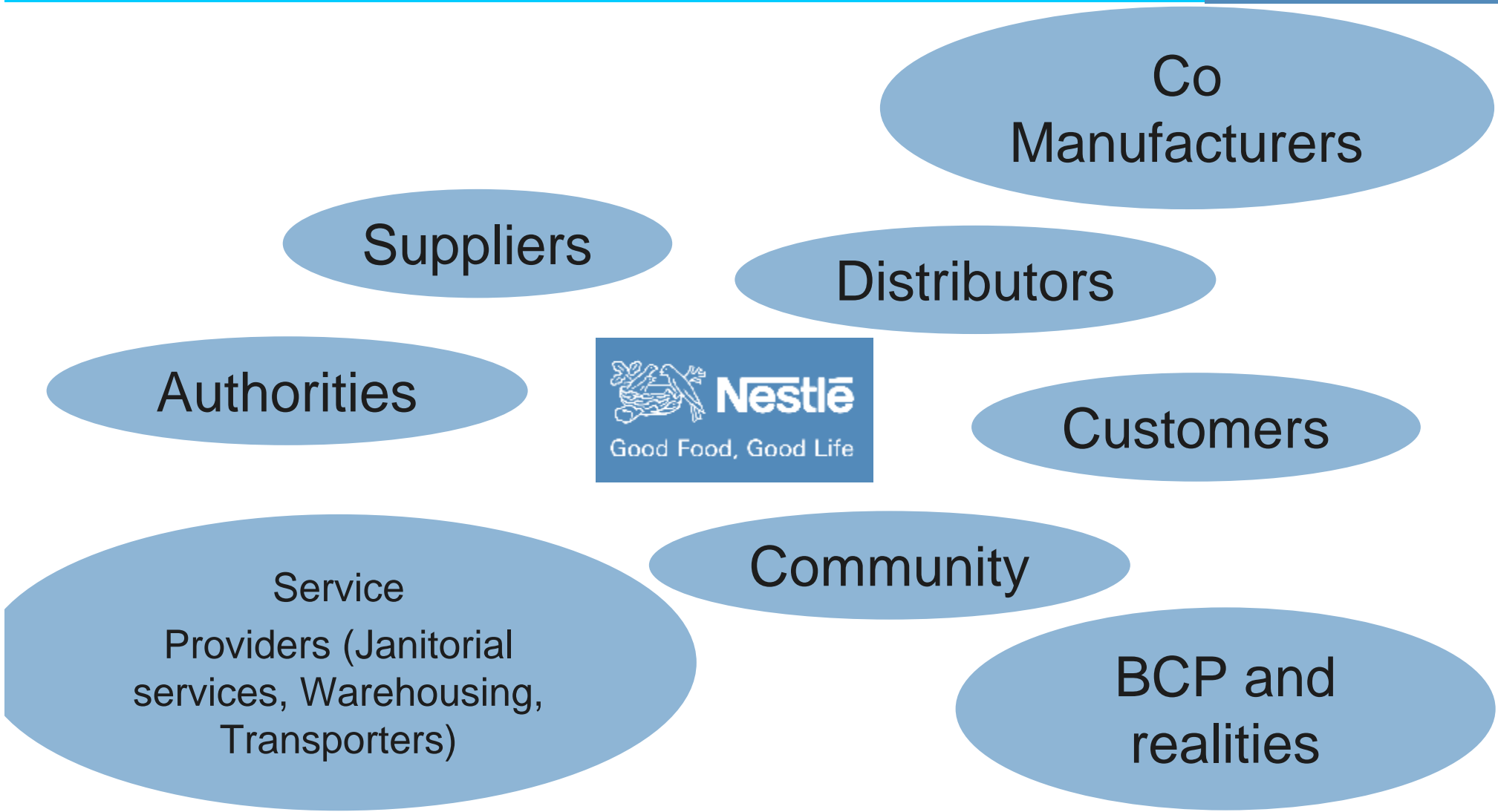


Main Consideration : What if part of the staff affected...  
To be developed further with # levels of persons affected.  
Always consider after crisis consequences

Difficulty: To link - "harmonize " - BCP of all divisions  
To implement effectively (Test exercises needed)

1. About PPP and BCP
2. Elaboration and implementation of PPP
3. Elaboration and implementation of BCP
4. **Stay Linked to the world...**
5. Conclusion words

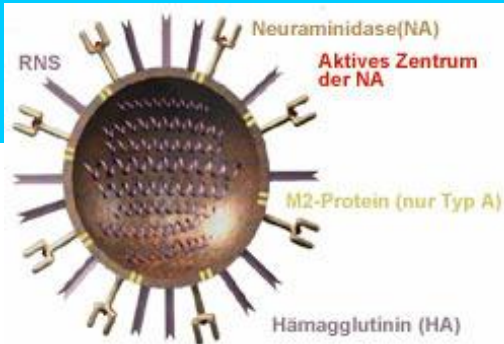
# Stay Linked to the world...



## WHAT OUR PARTNERS SHOULD DO

**Each one should analyse his situation**  
**Know the Thai Government Plan for AI**  
**Prepare a Pandemic Preparedness Plan**  
**Prepare a Business Continuity Plan**  
**Continuously keep updated of the situation ...**

1. About PPP and BCP
2. Elaboration and implementation of PPP
3. Elaboration and implementation of BCP
4. Stay Linked to the world...
5. **Conclusion words**



- **To have PPP and BCP is a due diligence regarding our employees, our partners and the community**
- **To have it on paper is far from enough and PPP / BCP must be validated by exercises and testing**
- **Better a simple approach but well rooted and linked to the social and economical environment**